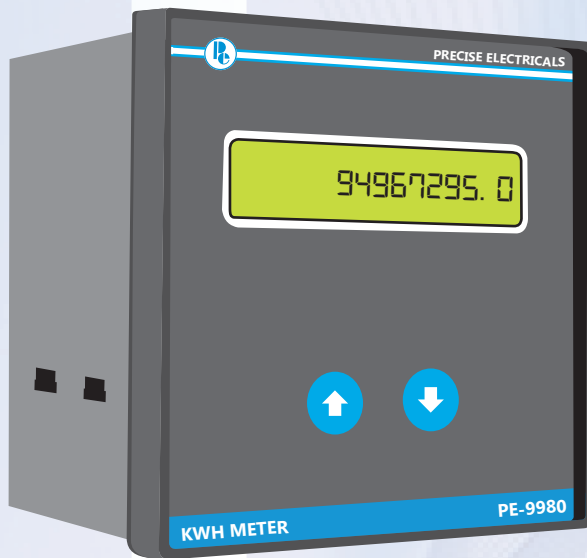




## KWH METER



- ORDER CODE  
PE-9980
- DESCRIPTION  
KWH Meter

### DISPLAY FEATURES

- ❖ Alphanumeric back lit LCD display.

### FEATURES

- ❖ Display of KWh.
- ❖ Microcontroller based technology.
- ❖ Password protection.
- ❖ Easy user interface.
- ❖ Easy to install.
- ❖ Confirms to IEC standards.
- ❖ 1 year warranty.
- ❖ Rugged & can be used under extreme environmental conditions.
- ❖ Easy readability.
- ❖ High resolution.
- ❖ Compact enclosure.
- ❖ Cost effective

### OPTIONAL FEATURES

- ❖ Optional RS 485 communication available for interface
- ❖ With PC along with software.
- ❖ Dual source support.[Optional] (for E.B. + D. G. KWh)

### TECHNICAL SPECIFICATIONS

- |                         |                             |
|-------------------------|-----------------------------|
| ❖ Auxiliary supply      | 230Vac $\pm$ 10%.           |
| ❖ Accuracy              | Class 1                     |
| ❖ Operating temperature | +5°C to+60°C                |
| ❖ Maximum range         | up to 8 digits [99999999.9] |



### MECHANICAL SPECIFICATION

- ❖ Dimensions 96 (L)× 96(W)× 60(D) mm
- ❖ Panel Cut Out 91 mm x 91 mm
- ❖ Weight 490gm

### WIRING DIAGRAM

